
Recent Developments and Experiences

Japan Transport Safety Board

ITSA Annual Conference 2018

➤ Numbers of accidents/incidents occurred in 2017

	Accidents (Fatalities)		Incidents
Aviation	20	(22)	17
Railways	19	(10)	1
Marine	755	(90)	140

➤ Numbers of investigation reports published in 2017

	Accidents	Incidents	Average months to publish
Aviation	16	9	16 months
Railways	23	2	12 months (excluding crossing accidents)
Marine	825	122	13 months (for 15 serious accidents)

Injuries during emergency evacuation



Occurred in Feb. 2016
Published in Dec. 2017



Injuries during emergency evacuation



The slogan is
“Well, let’s go by plane”

- 3 passengers were injured during emergency evacuation following a JAL aircraft engine fire.
- Safety actions are required to be taken by regulator and airlines to promote understanding about safe evacuation.
- JTSB distributed safety posters to raise awareness

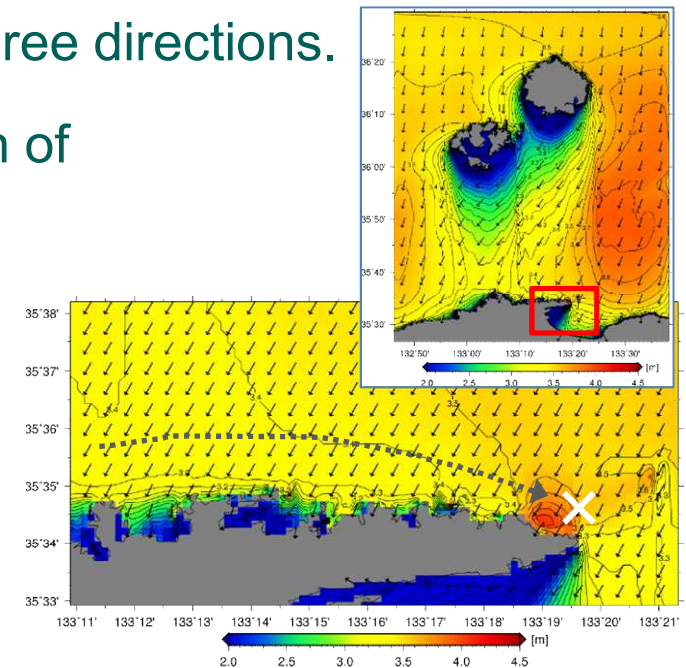
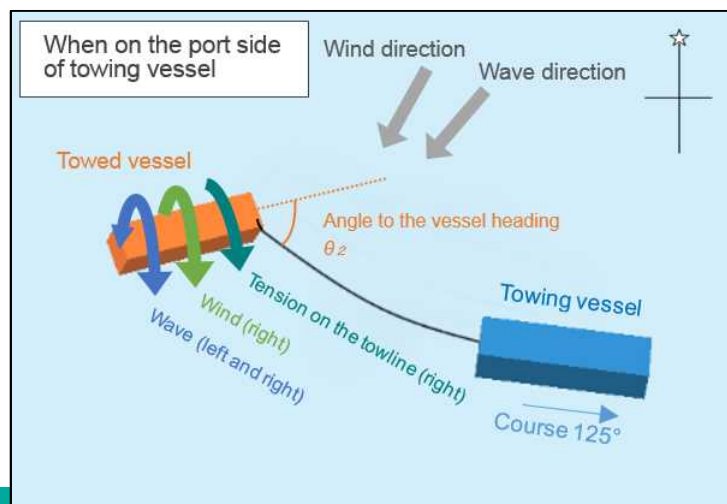
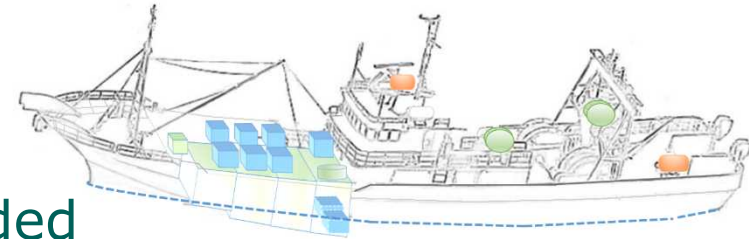
Capsizing of towed fishing vessel

- A Crab-Fishing Vessel Daifuku-Maru capsized while being towed by another vessel, leaving 4 dead and 5 missing.

Occurred in Dec. 2016
Published in Nov. 2017

< Probable causes >

- Lowering of the vessel stability due to added structures and water tanks on the deck.
- Strong wind and combined high waves from three directions.
- Unstable towing force due to insufficient length of the towline.



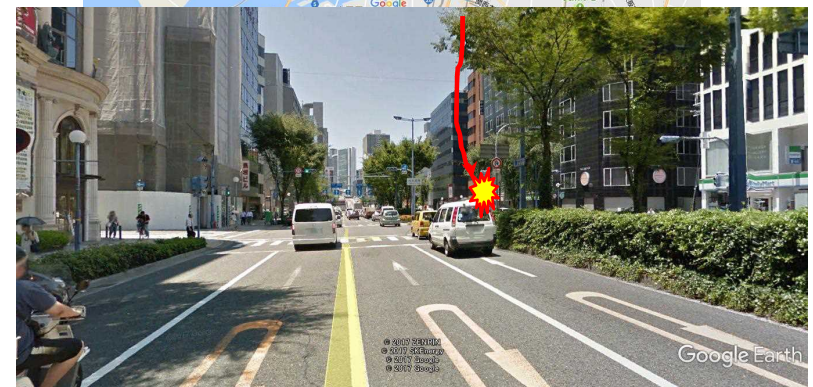
Panel falling incident (ongoing investigation)

The Boeing 777-200 of KLM868 took off from Kansai International Airport at 10:40 on Sept. 23 and was climbing over Osaka City, it dropped a panel (approx. 100cm x 60 cm, approx. 4.3kg) of the fuselage fairing.

The panel collided with a car driving in Osaka city. Nobody was hurt.

This is under investigation in cooperation with DSB and NTSB.

Not a few parts fall from aircraft, but the social concern about this is increasing in Japan since the air route cannot avoid the center of big cities such as in Tokyo and Osaka.



*Thank you for
your attention*

