

Rail Accident Investigation Branch

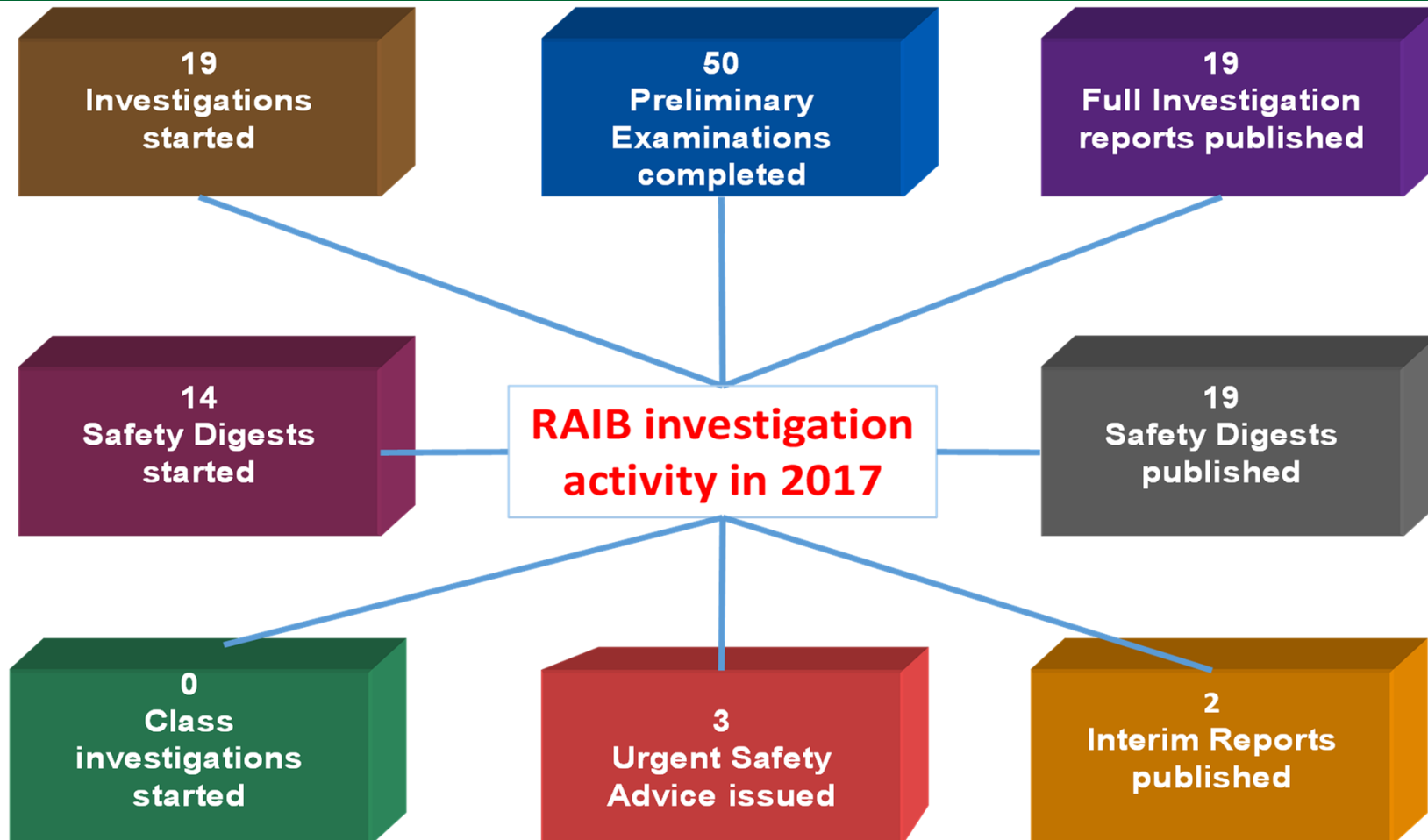
Recent developments and experiences



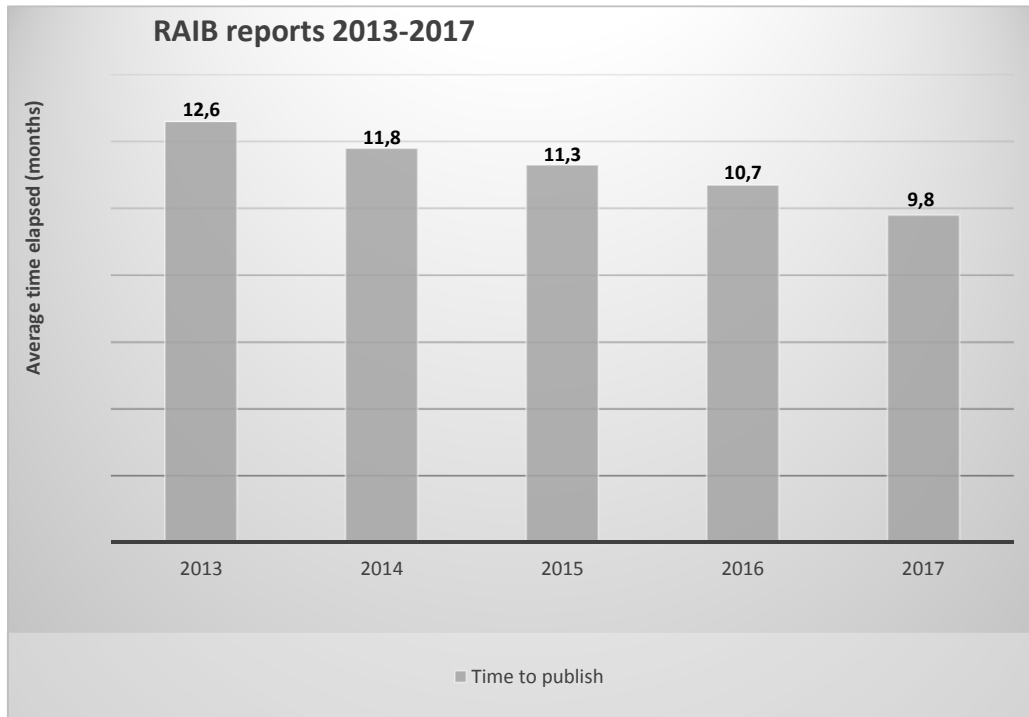
Presentation to ITSA
Baku, May 2018



Key data for 2017



Time to publish



The Sandilands tram accident

- Overturned travelling at 73 km/h on 30 metre radius curve
- 7 fatalities
- 19 seriously injured
- 42 passengers & driver suffered minor injuries



Key activities since the last meeting

Over the last 12 months the RAIB has delivered a number of important changes designed to enhance the capabilities of the Branch. These include:

- a complete reorganisation of the way that administration and logistical support is provided to inspectors, including the introduction of a new health and safety management post
- increased use of drones for photography and the creation of 3D models of accident sites using photogrammetry software
- development of our capability to create 3D modelling and animations of complex dynamic events (such as the overturing of the Sandilands tram)
- creation of a new corporate video, and short videos to accompany the publication of some reports

Key activities since the last meeting (2)

- refreshed media training and the adoption of a more proactive approach to the media
- published a regular 'safety lines' article in a journal read by railway staff
- established a more proactive approach to coroners' inquests
- established a programme of operational readiness exercises with the police
- contributed to ongoing developments in the area of road accident investigation
- provided support to the newly created Health Care Safety Investigation Branch (HSIB)
- in October we facilitated a seminar for accident investigators working in the UK rail industry
- we commissioned an independent survey of our stakeholders

Feedback via our stakeholder survey

- high approval ratings (86 to 87%) against criteria such as professionalism
- 91% of the respondents believed that RAIB investigations make an important contribution to improving railway safety
- RAIB was also seen to be performing well in respect of its independence and expertise
- the vast majority (89 to 90%) of those surveyed consider our recommendations to be clear, well targeted, and well supported by evidence
- 21% of those who responded to our survey thought that RAIB takes too long to complete its investigations



RAIB's international activities

National Investigation Body Network

We continue to participate in the European Union (EU) network of National Investigation Bodies (NIBs).

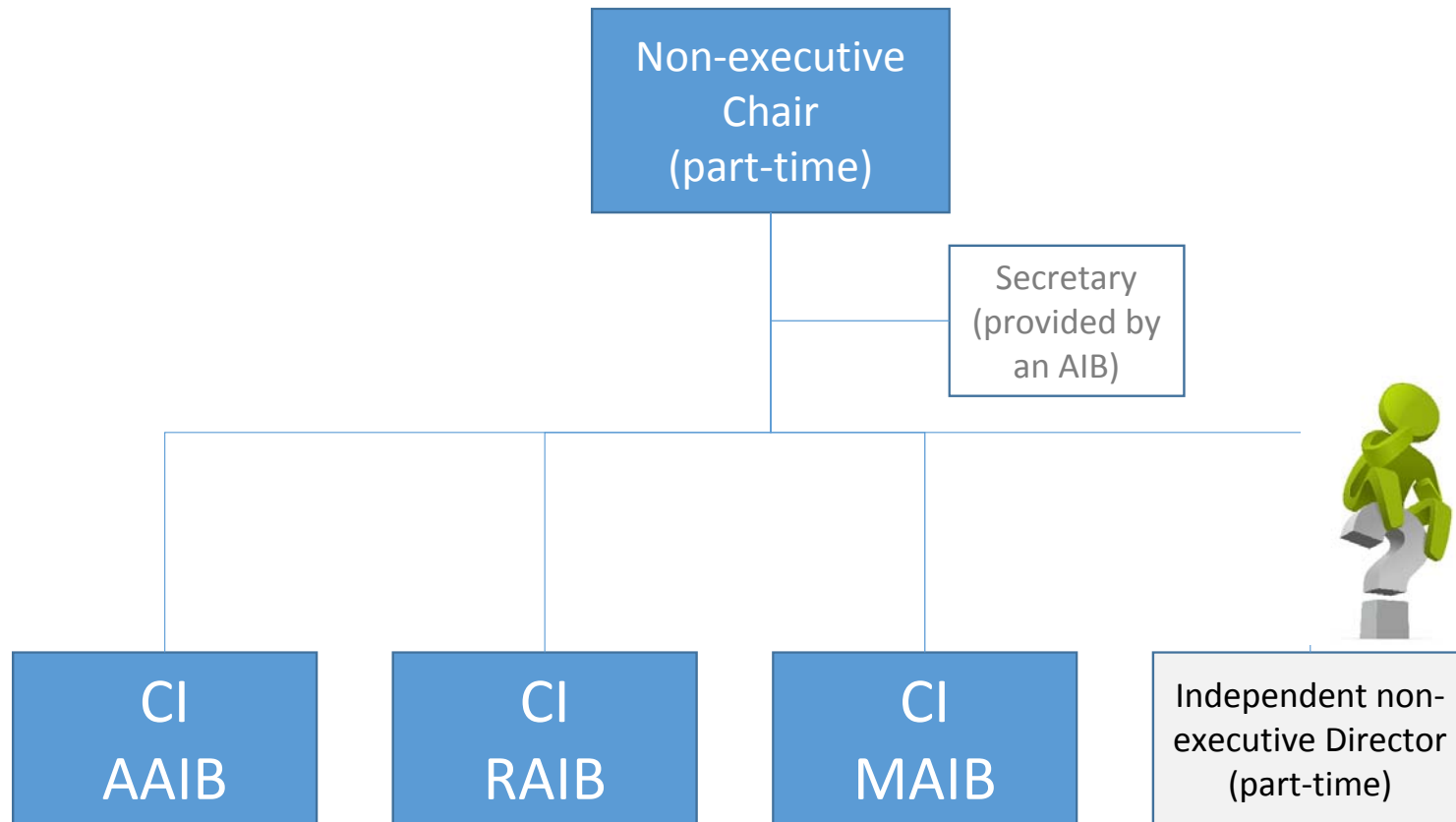
As a result of the recent changes to the Directive we are now working with a number of other NIBs to develop:

- a peer review process; and
- the improved sharing of knowledge between NIBs.

Collaboration between the UK AIBs

- We have created a formal Tri-branch Management Board (TMB) with a part-time non-executive chair (currently being recruited)
- Seven working groups have been established to develop options for improved synergies. The overall objectives are:
 - maximise the operational effectiveness and resilience of the three AIBs by better enabling mutual support and the sharing of resources;
 - enhance capabilities by facilitating the free exchange of ideas and learning; and
 - provide a framework for the exploration of potential efficiency improvements

Tri-branch Management Board (TMB)



The Role Of The Tri-Branch Board.....

The key role of the new Board will be to:

- shape and establish strategic direction for the new functions of the Board;
- explore potential synergies to improve effectiveness, efficiency and resilience, whilst safeguarding the AIB's functional independence in the conduct of investigations;
- drive change in the areas identified to be beneficial and to hold the Chief Inspectors accountable for delivery of agreed actions;
- co-ordinate responses to areas of concern common to all AIBs;
- give the AIBs a single voice when resisting external threats to their independence, or responding to criticism;
- provide strategic direction on ad-hoc advice to Ministers;
- promote and disseminate good practice between Branches; and
- achieve the above at a reasonable cost and without creating excessive bureaucracy or affecting the Chief Inspectors' statutory powers and obligations.

What the TMB Does NOT do.....

Since each of the AIBs is required by their respective establishing regulations to remain independent in the way it conducts its investigations, the Board will be precluded from:

- any involvement in a decision on whether or not to investigate an incident or accident, or in setting the scope of an investigation;
- any interference in an ongoing investigation;
- any involvement in the review and approval of reports for publication;
- any involvement in the assessment of responses to recommendations; or
- ordering any change to a published report or the re-opening of an investigation.

The synergy working groups

Mutual support during major accidents
[MAR]

Health and safety
[H&S]

Recorded data
[Rec data]

Case management systems
[CMS]

Human factors
[HF]

General administration
[Admin]

Joint agreements and legal issues
[JALI]

Any questions?

